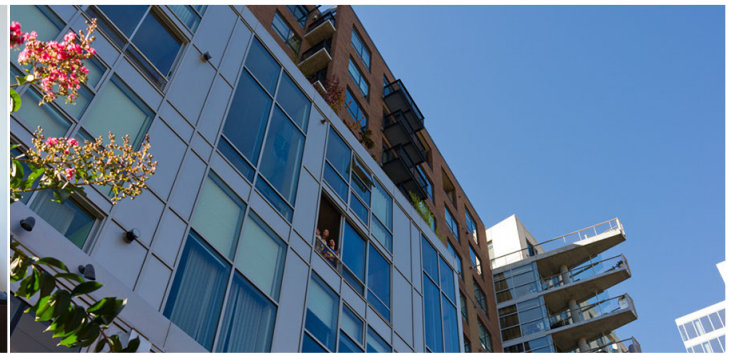
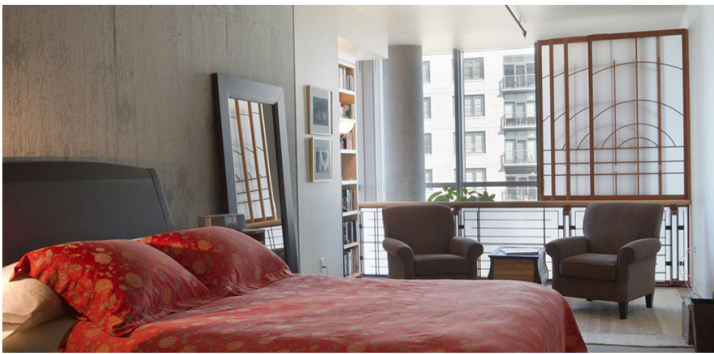




PARK PLACE: IN THE HEART OF THE PEARL
PREMIERE 2-BED + DEN, 3-BATH LOFT-STYLE CONDO





PARK PLACE | 922 NW 11TH AVENUE, UNIT 513, PORTLAND, OR 97209 | \$845,000

LIVE BEAUTIFULLY in the **HEART** of the Pearl! But don't waste a minute... over 2,000 sf, dramatic, modern, effortless east-view living.

Exceptional 5th floor "Paris Viewpoint" on Portland's most desirable Urban lifestyle location including Jamison Park, Downtown, bridges and mountains. Easy Streetcar and Zip Car access. Quiet east-side exposure with panoramic views. Extraordinary great room with pillars

& fireplace, floor to ceiling sliding window panels. Open gourmet kitchen with custom blue granite counters & gathering bar. Glorious master suite featuring sliding shoji panels opening to sunrise view! Second bedroom features modern fold down wall bed, and full hall bath. Main floor has an additional private den or sweet guest room with access to 3rd full bath.

Premier location, concierge, private parking, storage, & more!

- 2- bed + den/guest suite, 3 full bath
- Dramatic floor-ceiling windows throughout

- Gas fireplace
- Storage, private parking
- Best location in Pearl!



503 242 9000

www.laurieholland.com

526 NW 24th Avenue, Portland, OR 97210

laurie@laurieholland.com
frankyost@laurieholland.com

